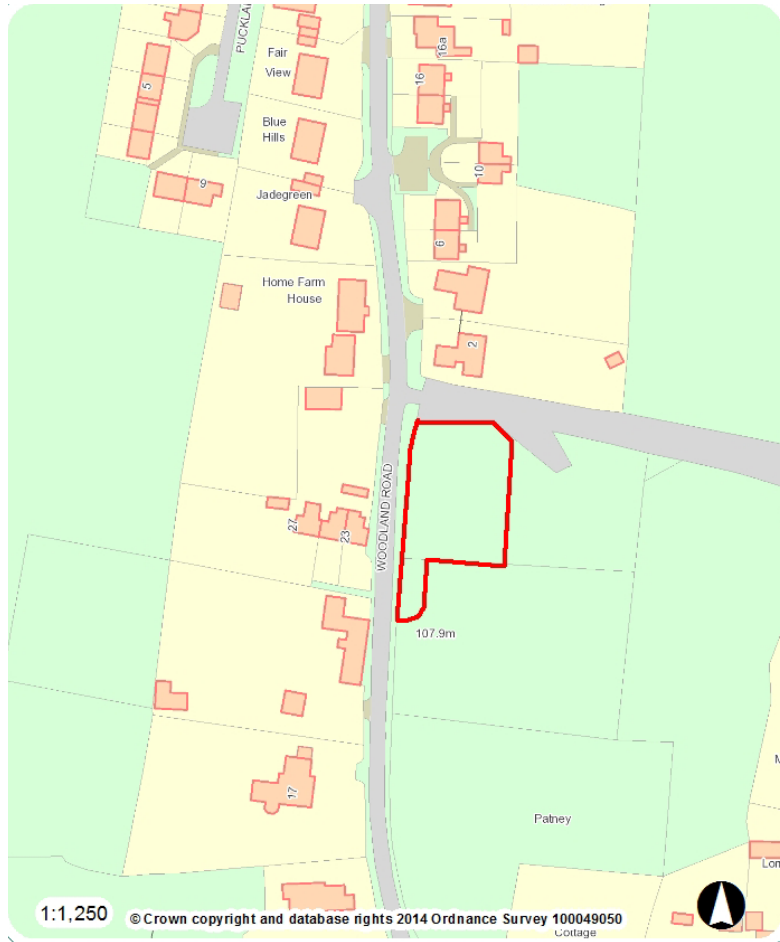


Eastern Area Planning Committee

15th September 2016



7a) 16/03703/FUL Land at Woodland Road, Patney, Devizes, Wiltshire
Erection of a detached specialist dwelling for disabled person
Recommendation Refusal



Site Location Plan

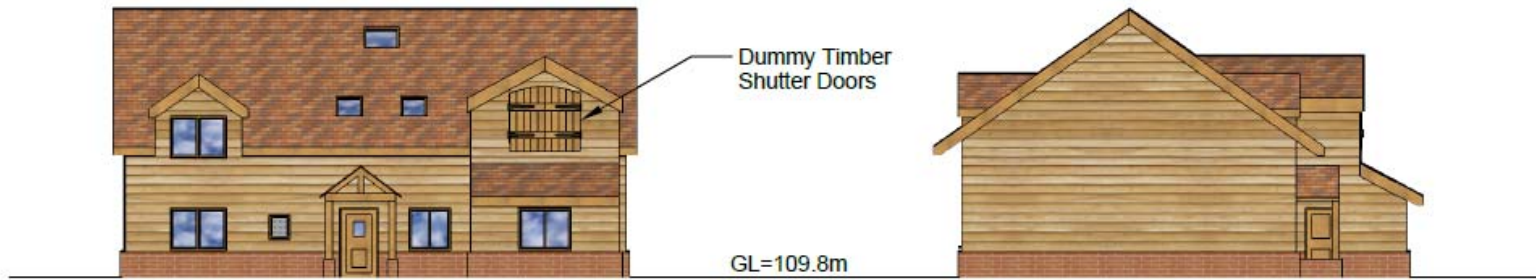


Aerial Photography



Site Plan & Indicative Landscape Strategy





West Elevation

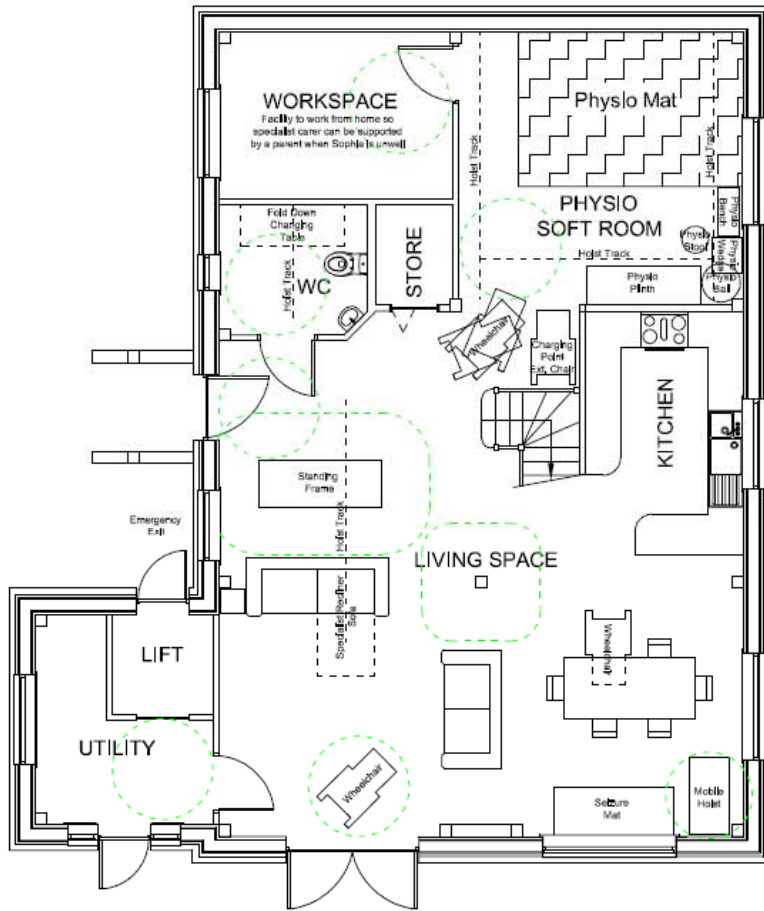
North Elevation



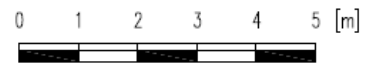
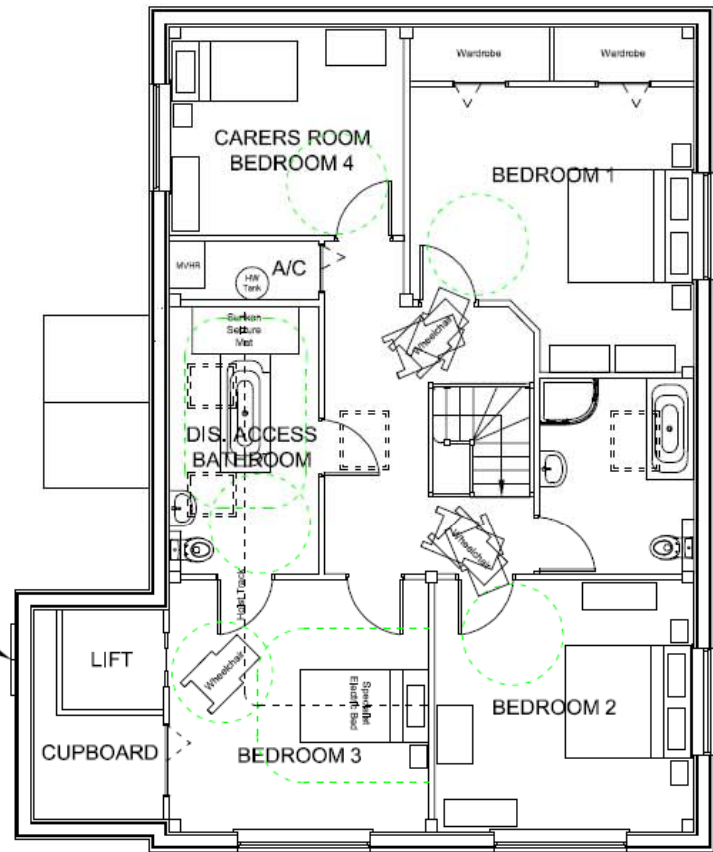
South Elevation

East Elevation





Dummy Timber Shutter Doors





VP1

Approximate OS map elevation: 110m AOD.

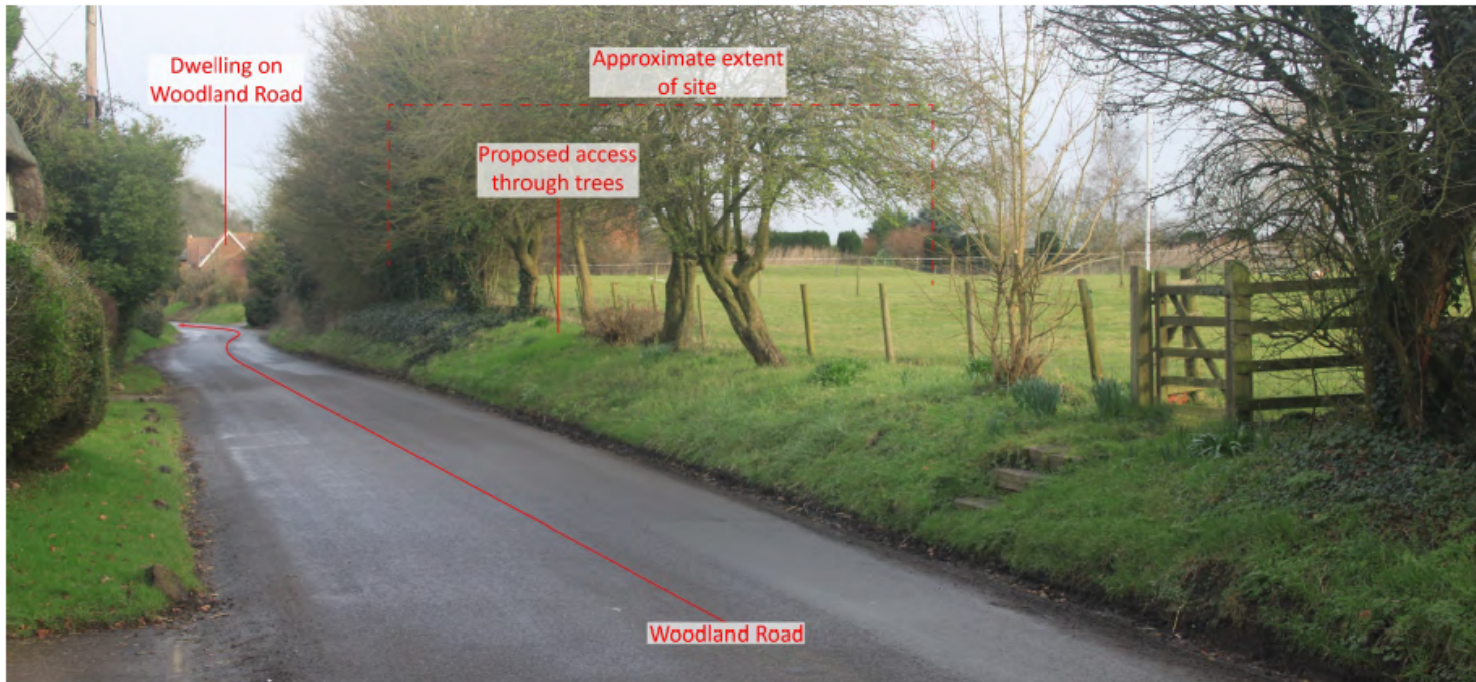
Approximate distance from site boundary: Adjacent.



VP2

Approximate OS map elevation: 112m AOD.

Approximate distance from site boundary: Adjacent.



VP6

Approximate OS map elevation: 110m AOD.

Approximate distance from site boundary: 36m.

Grade II Listed Building opposite site/entrance



View from Green to south of the site



Eastern Area Planning Committee

15th September 2016

